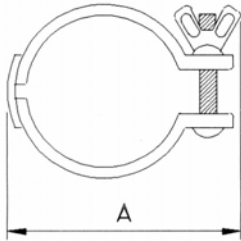


advanced vacuum technology



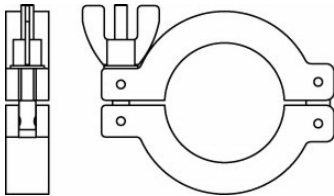


NW CLAMPING RINGS - STAINLESS STEEL

ORDER CODE	NW	A	Price
CR16-100	NW10/16	50	
CR25-100	NW20/25	63	
CR40-100	NW32/40	76	
CR50-100	NW50	100	

Temperature range -10 to +125°C

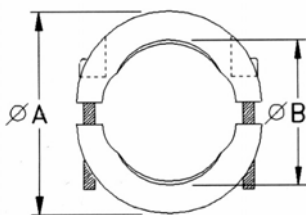
NW SWING CLAMPS - ALUMINIUM



ORDER CODE	NW	Price
CS16-101	NW10/16	
CS25-101	NW20/25	
CS40-101	NW32/40	
CS50-101	NW50	

Pressure range 10^{-7} mbar to 10 bar
Temperature range -10 to +200°C

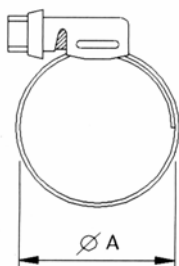
NW CLAMPS (METAL SEAL) - STAINLESS STEEL



ORDER CODE	NW	A	B	Price
CM16-102	NW10/16	54	22	
CM25-102	NW20/25	64	32	
CM40-102	NW32/40	82	47	
CM50-102	NW50	112	62	

Pressure range 10^{-8} mbar to 3 bar

NW PVC HOSE CLAMP - STAINLESS STEEL



ORDER CODE	NW	A	Price
CH16-103	NW10/16	25	
CH40-103	NW40	50	
CH50-103	NW50	60	

NW Fittings

SECTION

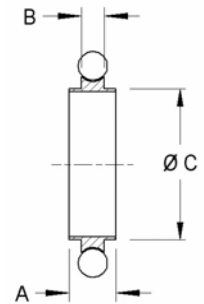
1

NW CENTRING RING. VITON® / STAINLESS STEEL

ORDER CODE	NW	A	B	C	Price
CR10-104	NW10	8	3.9	12	
CR16-104	NW16	8	3.9	17	
CR25-104	NW25	8	3.9	26	
CR40-104	NW40	8	3.9	41	
CR50-104	NW50	8	3.9	52	

Pressure range 10^{-7} mbar to 1 bar
 Temperature range -10 to +200°C (Sustained 150°C).

Nitrile rings available on request.

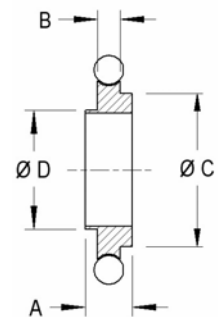


NW REDUCING CENTRING RING. VITON® / STAINLESS STEEL

ORDER CODE	NW	A	B	C	D	Price
RCR10/16-105	NW10/16	8	3.9	17	12	

Pressure range 10^{-7} mbar to 1 bar
 Temperature range -10 to +200°C (Sustained 150°C).

Nitrile rings available on request.

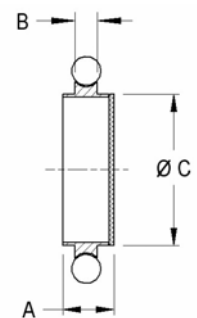


NW MESH CENTRING RING. VITON® / STAINLESS STEEL

ORDER CODE	NW	A	B	C	Price
MCR16-106	NW16	9	3.9	17	
MCR25-106	NW25	9	3.9	26	
MCR40-106	NW40	9	3.9	41	
MCR50-106	NW50	9	3.9	52	

Mesh aperture 0.110mm (ISO 4783-2)
 Pressure range 10^{-7} mbar to 1 bar. Temperature range -10 to +200°C (Sustained 150°C).

Nitrile rings available on request.

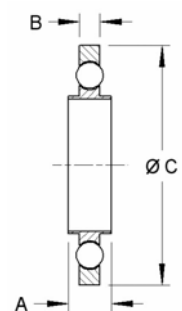


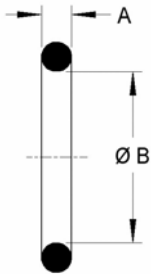
NW TRAPPED CENTRING RING. VITON® / STAINLESS STEEL

ORDER CODE	NW	A	B	C	Price
TCR16-104	NW16	8	3.75	32	
TCR25-104	NW25	8	3.75	42	
TCR40-104	NW40	8	3.75	57	
TCR50-104	NW50	8	3.75	77	

Pressure range 10^{-7} mbar to 10 bar
 Temperature range -10 to +100°C

Nitrile rings available on request.

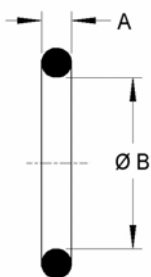




'O' Ring (10-off) NITRILE

ORDER CODE	NW	A	B	Price
ORN10-108	NW10	5	15	
ORN16-108	NW16	5	18	
ORN25-108	NW25	5	28	
ORN40-108	NW40	5	42	
ORN50-108	NW50	5	55	

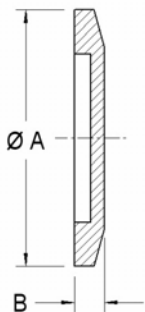
Pressure range 10^{-7} mbar to 1 bar
 Temperature range -10 to +100°C



'O' Ring (10-off) VITON®

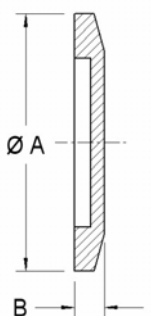
ORDER CODE	NW	A	B	Price
ORV10-109	NW10	5	15	
ORV16-109	NW16	5	18	
ORV25-109	NW25	5	28	
ORV40-109	NW40	5	42	
ORV50-109	NW50	5	55	

Pressure range 10^{-7} mbar to 1 bar
 Temperature range -10 to +200°C (Sustained 150°C).



NW BLANK FLANGE. STAINLESS STEEL

ORDER CODE	NW	A	B	Price
BF10-130	NW10	30	6	
BF16-130	NW16	30	6	
BF25-130	NW25	40	6	
BF40-130	NW40	55	6	
BF50-130	NW50	75	6	



NW BLANK FLANGE. ALUMINIUM

ORDER CODE	NW	A	B	Price
BFA10-130	NW10	30	6	
BFA16-130	NW16	30	6	
BFA25-130	NW25	40	6	
BFA40-130	NW40	55	6	
BFA50-130	NW50	75	6	

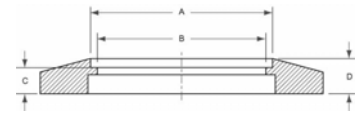
NW Fittings

SECTION 1

NW BORED FLANGE. STAINLESS STEEL

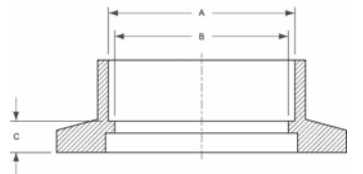
ORDER CODE	NW	A	B	C	D	Price
BOF10-131	NW10	14	10	4	5.1	
BOF16-131	NW16	20	16	3.3	4.3	
BOF25-131	NW25	28	24	3.5	4.6	
BOF40-131	NW40	44.5	41	3.3	4.4	
BOF50-131	NW50	57	51	4.4	5.4	

Special bores available on request



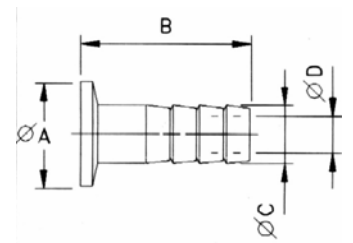
NW WELD SOCKETS, METRIC. Stainless Steel

ORDER CODE	NW	A	B	C	Price
WS16S-136	NW16	13	11.4	4	
WS16-136	NW16	19.3	17.3	3.3	
WS25-136	NW25	25.9	22.1	3.5	
WS40-136	NW40	38.6	34.9	3.3	
WS50-136	NW50	51.3	47.5	4.4	



NW HOSE NOZZLE. Stainless Steel

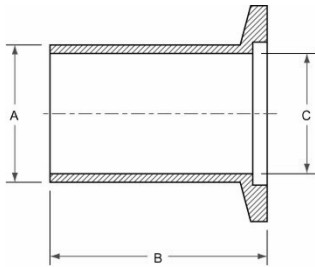
ORDER CODE	NW	A	B	C	D	Price
HN10-139	NW10	30	40	12	7	
HN16-139	NW16	30	40	12	7	
HN25-139	NW25	40	40	12	7	
HN40-139	NW40	55	40	12	7	



NW FLANGE CAP

ORDER CODE	NW	Pack Size	Price
KF10PC	NW10	10	
KF16PC	NW16	10	
KF25PC	NW25	10	
KF40PC	NW40	10	
KF50PC	NW50	10	

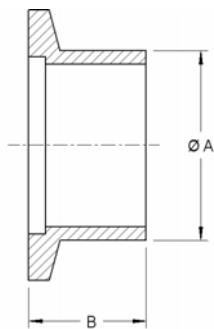
NW Fittings



NW TUBULATIONS, LONG, METRIC, ST. STEEL

ORDER CODE	NW	A	B	Price
TUL10-132	NW10	14	70	
TUL16-132	NW16	20	70	
TUL25-132	NW25	28	70	
TUL40-132	NW40	44.5	70	
TUL50-132	NW50	57	70	

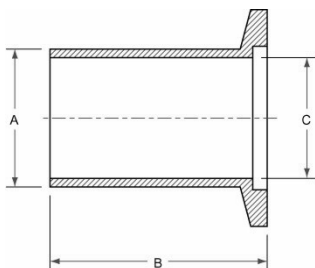
Special lengths and diameters available on request



NW TUBULATIONS, SHORT, METRIC, ST. STEEL

ORDER CODE	NW	A	B	Price
TUS10-134	NW10	14	30	
TUS16-134	NW16	20	30	
TUS25-134	NW25	28	30	
TUS40-134	NW40	44.5	30	
TUS50-134	NW50	57	30	

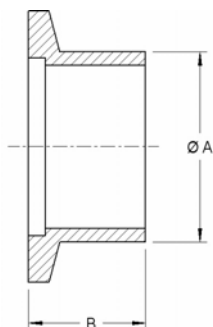
Special lengths and diameters available on request



NW TUBULATIONS, LONG, INCH, ST. STEEL

ORDER CODE	NW	A	B	Price
TUL10I-133	NW10	1/2"	40	
TUL16I-133	NW16	3/4"	40	
TUL25I-133	NW25	1"	40	
TUL40I-133	NW40	1.1/2"	40	
TUL50I-133	NW50	2"	40	

Special lengths and diameters available on request



NW TUBULATIONS, SHORT, INCH, ST. STEEL

ORDER CODE	NW	A	B	Price
TUS10I-135	NW10	1/2"	12.7	
TUS16I-135	NW16	3/4"	12.7	
TUS25I-135	NW25	1"	12.7	
TUS40I-135	NW40	1.1/2"	19	
TUS50I-135	NW50	2"	19	

Special lengths and diameters available on request

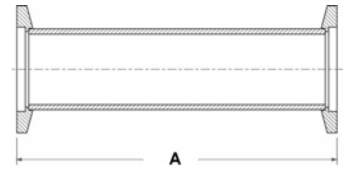
NW Fittings

SECTION 1

NW STRAIGHT CONNECTOR, (FULL NIPPLE). Stainless Steel

ORDER CODE	NW	A	Price
SC10-137	NW10	60	
SC16-137	NW16	80	
SC25-137	NW25	100	
SC40-137	NW40	130	
SC50-137	NW50	140	

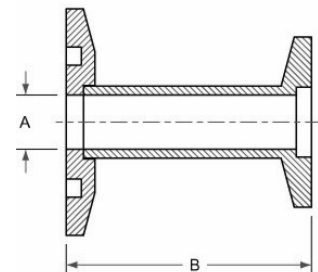
Special lengths available on request



NW REDUCING ADAPTOR. Stainless Steel

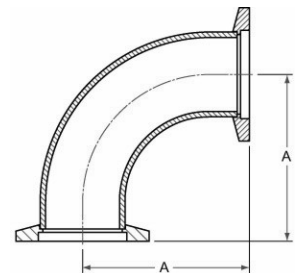
ORDER CODE	NW	A	B	Price
RA2510-138	NW25/10	14	28	
RA2516-138	NW25/16	20	28	
RA4016-138	NW40/16	20	28	
RA4025-138	NW40/25	28	28	
RA5016-138	NW50/16	20	28	
RA5025-138	NW50/25	28	28	
RA5040-138	NW50/40	44.5	28	

Special lengths available on request



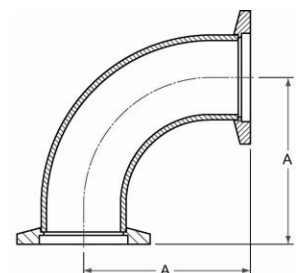
NW ELBOW 90°. Stainless Steel

ORDER CODE	NW	A	Price
ELB10-141	NW10	30	
ELB16-141	NW16	40	
ELB25-141	NW25	50	
ELB40-141	NW40	65	
ELB50-141	NW50	70	

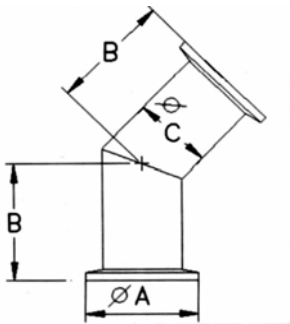


NW ELBOW 90°. Aluminium

ORDER CODE	NW	A	Price
ELB10A-140	NW10	30	
ELB16A-140	NW16	40	
ELB25A-140	NW25	50	
ELB40A-140	NW40	65	

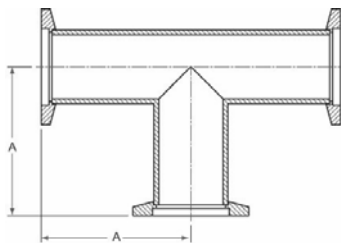


NW Fittings



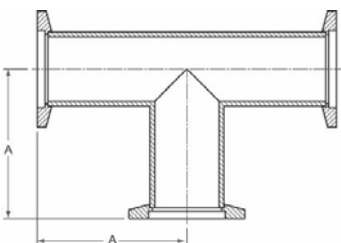
NW ELBOW 45°. Stainless Steel

ORDER CODE	NW	A	B	C	Price
ELB410-142	NW10	30	30	14	
ELB416-142	NW16	30	23.2	20	
ELB425-142	NW25	40	28.5	28	
ELB440-142	NW40	55	42.7	44.5	
ELB450-142	NW50	75	50.6	57	



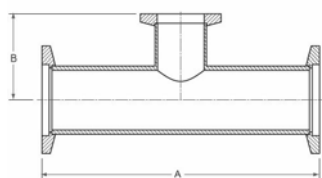
NW T-PIECE. Stainless Steel

ORDER CODE	NW	A	Price
TEE10-144	NW10	30	
TEE16-144	NW16	40	
TEE25-144	NW25	50	
TEE40-144	NW40	65	
TEE50-144	NW50	70	



NW T-PIECE. Aluminium

ORDER CODE	NW	A	Price
TEE10A-143	NW10	60	
TEE16A-143	NW16	80	
TEE25A-143	NW25	100	
TEE40A-143	NW40	130	



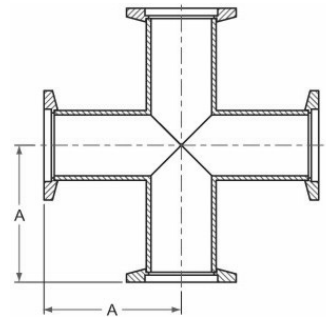
NW UNEQUAL T-PIECE. Stainless Steel

ORDER CODE	NW	A	B	Price
RTE2516-145	NW25/16	100	40	
RTE4016-145	NW40/16	130	40	
RTE4025-145	NW40/25	130	50	
RTE5016-145	NW50/16	140	50	
RTE5025-145	NW50/25	140	65	

NW Fittings

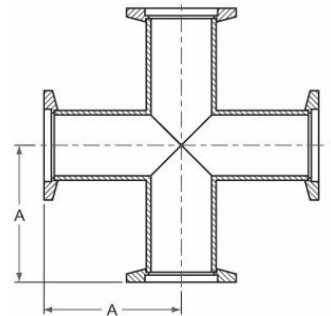
NW CROSS. Stainless Steel

ORDER CODE	NW	A	Price
X10-147	NW10	30	
X16-147	NW16	40	
X25-147	NW25	50	
X40-147	NW40	65	
X50-147	NW50	70	



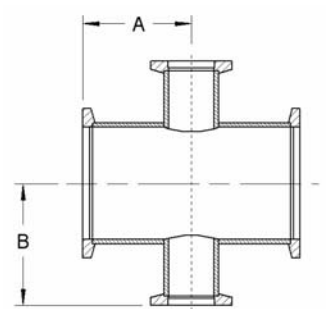
NW CROSS. Aluminium

ORDER CODE	NW	A	Price
X10A-146	NW10	30	
X16A-146	NW16	40	
X25A-146	NW25	50	
X40A-146	NW40	65	

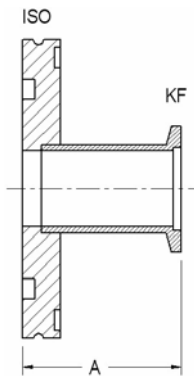


NW REDUCING CROSS. Stainless Steel

ORDER CODE	NW	A	B	Price
RX2510-148	NW25/10	35	35	
RX2516-148	NW25/16	50	40	
RX4016-148	NW40/16	40	45	
RX4025-148	NW40/25	65	50	
RX5025-148	NW50/25	70	50	

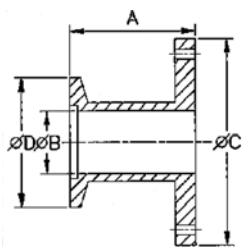


NW Fittings



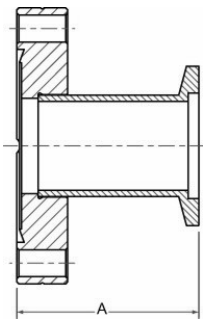
ADAPTOR. NW/ISO-K. Stainless Steel

ORDER CODE	NW	ISO	A	Price
AD2563-160	NW25	ISO63	50	
AD4063-160	NW40	ISO63	50	
AD4080-160	NW40	ISO80	118	
AD40100-160	NW40	ISO100	50	
AD5063-160	NW50	ISO63	50	
AD5080-160	NW50	ISO80	118	
AD50100-160	NW50	ISO100	50	



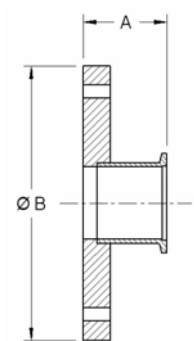
ADAPTOR. NW/ISO BOLTED. Stainless Steel

ORDER CODE	NW	ISO	ORDER	A	Price
AD5040-160	NW50	ISO40	50	50	



ADAPTOR. NW/CF. Stainless Steel

ORDER CODE	NW	CF	A	Price
AD1616-161	NW16	CF16	36	
AD1635-161	NW16	CF35	36	
AD2535-161	NW25	CF35	36	
AD403561	NW40	CF35	50	
AD5063-161	NW50	CF63	50	



ADAPTOR. NW/ASA. Stainless Steel No 'O' Ring Groove

ORDER CODE	NW	ASA	A	B	Price
AD4038-162	NW40	1.1/2"	46	127	
AD4050-162	NW40	2"	46	152	
AD4075-162	NW40	3"	46	191	
AD5038-162	NW50	1.1/2"	46	127	
AD5050-162	NW50	2"	46	152	
AD5075-162	NW50	3"	46	191	

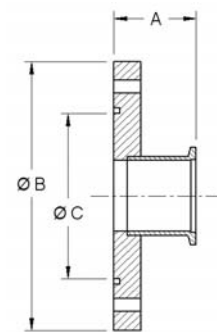
NW Fittings

SECTION

1

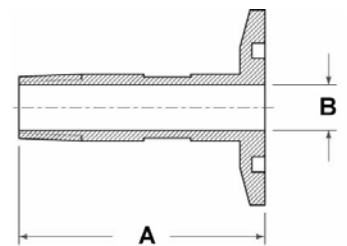
ADAPTOR. NW/ASA. Stainless Steel With 'O' Ring Groove

ORDER CODE	NW	ASA	A	B	C	Price
AD4050G-163	NW40	2"	46	152	88.5	
AD4075G-163	NW40	3"	46	191	114.5	
AD5050G-163	NW50	2"	46	152	88.5	
AD5075G-163	NW50	3"	46	191	114.5	



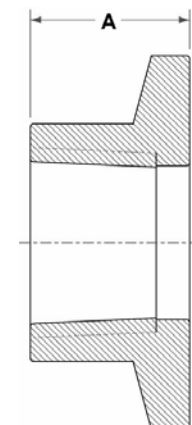
ADAPTOR. NW/NPT Male. Stainless Steel

ORDER CODE	NW	NPT	A	B	Price
NPT163-164	NW16	1/8"	40	4.7	
NPT166-164	NW16	1/4"	50	7.1	
NPT253-164	NW25	1/8"	40	4.7	
NPT256-164	NW25	1/4"	50	7.1	
NPT2513-164	NW25	1/2"	75	11.9	
NPT2519-164	NW25	3/4"	45	15.9	
NPT406-164	NW40	1/4"	50	7.1	
NPT4013-164	NW40	1/2"	75	11.9	
NPT4019-164	NW40	3/4"	75	15.9	
NPT4025-164	NW40	1"	75	22.2	
NPT506-164	NW50	1/4"	50	7.1	
NPT5013-164	NW50	1/2"	75	11.9	
NPT5019-164	NW50	3/4"	75	15.9	
NPT5025-164	NW50	1"	75	22.2	



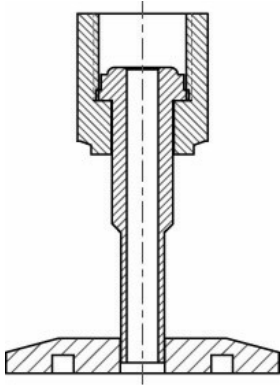
ADAPTOR. NW/NPT Female. Stainless Steel

ORDER CODE	NW	NPT	A	A/F	Price
NPT103F-165	NW10	1/8"	19	16	
NPT163F-165	NW16	1/8"	19	16	
NPT253F-165	NW25	1/8"	19	23	
NPT403F-165	NW40	1/8"	25.5	32	
NPT503F-165	NW50	1/8"	25.5	45	
NPT106F-165	NW10	1/4"	19	16	
NPT166F-165	NW16	1/4"	19	16	
NPT256F-165	NW25	1/4"	19	23	
NPT406F-165	NW40	1/4"	25.5	32	
NPT506F-165	NW50	1/4"	25.5	45	



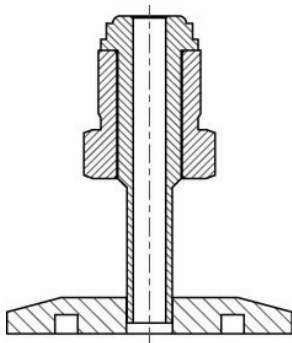
NW Fittings

ADAPTOR. NW/VCR® Female. Stainless Steel

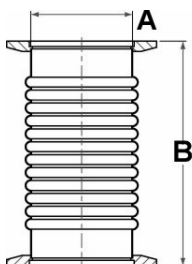


ORDER CODE	Pneurop	VCR	Price
VCR166F-166	NW16	1/4"	
VCR1613F-166	NW16	1/2"	
VCR256F-166	NW25	1/4"	
VCR2513F-166	NW25	1/2"	
VCR2519F-166	NW25	3/4"	
VCR406F-166	NW40	1/4"	
VCR4013F-166	NW40	1/2"	
VCR4019F-166	NW40	3/4"	
VCR506F-166	NW50	1/4"	
VCR5013F-166	NW50	1/2"	
VCR5019F-166	NW50	3/4"	

ADAPTOR. NW/VCR® Male. Stainless Steel



ORDER CODE	NW	VCR	Price
VCR166-167	NW16	1/4"	
VCR1613-167	NW16	1/2"	
VCR256-167	NW25	1/4"	
VCR2513-167	NW25	1/2"	
VCR2519-167	NW25	3/4"	
VCR406-167	NW40	1/4"	
VCR4013-167	NW40	1/2"	
VCR4019-167	NW40	3/4"	
VCR506-167	NW50	1/4"	
VCR5013-167	NW50	1/2"	
VCR5019-167	NW50	3/4"	

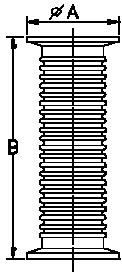


NW HYDROFORMED BELLOWS. Stainless Steel

ORDER CODE	NW	A	B	Compressed	Price
BEL16	NW16	16	127	95	
BEL25	NW25	24	127	95	
BEL40	NW40	41	127	95	
BEL50	NW50	51	127	95	

NW Fittings

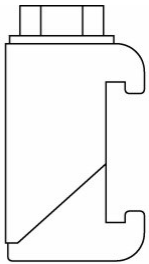
NW FLEXIBLE HOSE. Stainless Steel



NW10	ORDER CODE	NW	Hose ID	A	B	Price
	KFF-10-250	NW10	10	30	250	
	KFF-10-500	NW10	10	30	500	
	KFF-10-750	NW10	10	30	750	
	KFF-10-1000	NW10	10	30	1000	
	KFF-10-1500	NW10	10	30	1500	
	KFF-10-2000	NW10	10	30	2000	
	KFF-10-2500	NW10	10	30	2500	
	KFF-10-3000	NW10	10	30	3000	
NW16	ORDER CODE	NW	Hose ID	A	B	Price
	KFF-16-250	NW16	16	30	250	
	KFF-16-500	NW16	16	30	500	
	KFF-16-750	NW16	16	30	750	
	KFF-16-1000	NW16	16	30	1000	
	KFF-16-1500	NW16	16	30	1500	
	KFF-16-2000	NW16	16	30	2000	
	KFF-16-2500	NW16	16	30	2500	
	KFF-16-3000	NW16	16	30	3000	
NW25	ORDER CODE	NW	Hose ID	A	B	Price
	KFF-25-250	NW25	25	40	250	
	KFF-25-500	NW25	25	40	500	
	KFF-25-750	NW25	25	40	750	
	KFF-25-1000	NW25	25	40	1000	
	KFF-25-1500	NW25	25	40	1500	
	KFF-25-2000	NW25	25	40	2000	
	KFF-25-2500	NW25	25	40	2500	
	KFF-25-3000	NW25	25	40	3000	
NW40	ORDER CODE	NW	Hose ID	A	B	Price
	KFF-40-250	NW40	40	55	250	
	KFF-40-500	NW40	40	55	500	
	KFF-40-750	NW40	40	55	750	
	KFF-40-1000	NW40	40	55	1000	
	KFF-40-1500	NW40	40	55	1500	
	KFF-40-2000	NW40	40	55	2000	
	KFF-40-2500	NW40	40	55	2500	
	KFF-40-3000	NW40	40	55	3000	
NW50	ORDER CODE	NW	Hose ID	A	B	Price
	KFF-50-250	NW50	50	75	250	
	KFF-50-500	NW50	50	75	500	
	KFF-50-750	NW50	50	75	750	
	KFF-50-1000	NW50	50	75	1000	
	KFF-50-1500	NW50	50	75	1500	
	KFF-50-2000	NW50	50	75	2000	
	KFF-50-2500	NW50	50	75	2500	
	KFF-50-3000	NW50	50	75	3000	

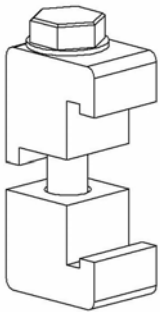
Braided Flexible
Available on request

Custom lengths for all sizes
Available on request.



ISO DOUBLE CLAW CLAMPS. Steel

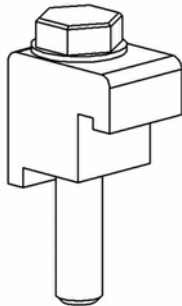
ORDER	Pneurop	A	Price
DC63/250	ISO63 to 250	M10	
DC320/500	ISO320 to 500	M12	
DC630	ISO630	M12	



ISO DOUBLE CLAW CLAMPS - Aluminium

ORDER CODE	Pneurop	A	Price
DCA63/100	ISO63 to 100	M10	
DCA160/250	ISO16 to 250	M10	

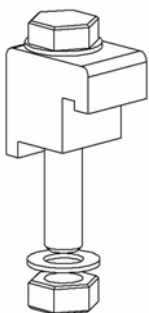
Pressure range 10^{-7} mbar to 1 bar
 Temperature range -10 to +200°C (Sustained 150°C).



ISO SINGLE CLAW CLAMPS - Steel

ORDER	Pneurop	A	Price
WC63/100	ISO63 to 100	M8	
WC160/250	ISO160 to 250	M10	
WC320/500	ISO320 to 500	M12	
WC630	ISO630	M12	

Used with blind tapped holes & centring ring.



ISO SINGLE CLAW CLAMP, NUT & WASHER - Steel

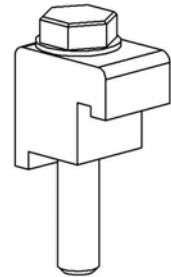
ORDER CODE	Pneurop	A	B	C	Price
WCN63/100	ISO63 to 160	22.5	M8	45	
WCN160/250	ISO160 to 250	23	M10	50	
WCN320/500	ISO320 to 500	36.5	M12	65	

Used with through bolt holes & centring ring.

ISO SINGLE CLAW CLAMP - Aluminium

ORDER CODE	ISO	A	Price
WCA63/100	ISO63 to 160	M8	

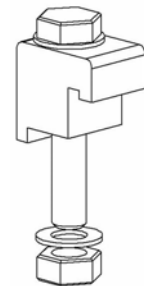
Used with blind tapped holes & centring ring.



ISO SINGLE CLAW CLAMP, NUT & WASHER - Aluminium

ORDER CODE	ISO	A	Price
WCAN63/100	ISO63 to 160	M8	

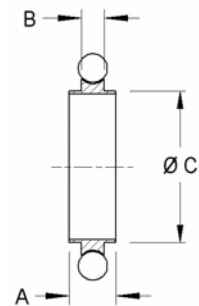
Used with through bolt holes & centring ring.



ISO CENTRING RING. VITON®. Stainless Steel

ORDER CODE	ISO	A	B	C	Price
CR63	ISO63	8	3.9	70	
CR100	ISO100	8	3.9	102	
CR160	ISO160	8	3.9	153	
CR200	ISO200	8	3.9	213	
CR250	ISO250	8	3.9	261	

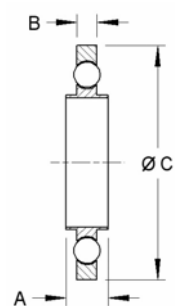
Additional sizes available on request

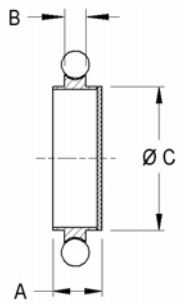


ISO TRAPPED CENTRING RING. VITON®. Stainless Steel

ORDER CODE	ISO	A	B	C	Price
TCR63	ISO63	8	3.9	94	
TCR100	ISO100	8	3.9	128	
TCR160	ISO160	8	3.9	179	
TCR200	ISO200	8	3.9	239	
TCR250	ISO250	8	3.9	287	

Additional sizes available on request
NOTE: Aluminium Outer



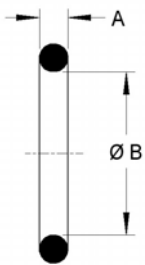


ISO MESH CENTRING RING. VITON®. Stainless Steel

ORDER CODE	ISO	A	B	C	Price
MCR63	ISO63	9	3.9	70	
MCR100	ISO100	9	3.9	102	
MCR160	ISO160	9	3.9	153	

Mesh aperture 0.110mm (ISO 4783-2)
Other sizes available on request.

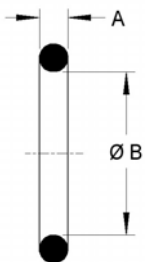
ISO VITON® 'O' RINGS



ORDER CODE	ISO	A	B	Price
ORV63	ISO63	5.3	76	
ORV80	ISO80	5.3	88	
ORV100	ISO100	5.3	107	
ORV160	ISO160	5.3	158	
ORV200	ISO200	5.3	221	
ORV250	ISO250	5.3	253	
ORV320	ISO320	7	330	
ORV400	ISO400	7	405	
ORV500	ISO500	7	507	
ORV630	ISO630	7	659	

Maximum bakeout temperature 200°C. Sustained use 150°C

ISO NITRILE 'O' RINGS

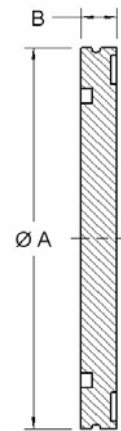


ORDER CODE	ISO	A	B	Price
ORN63	ISO63	5.3	76	
ORN80	ISO80	5.3	88	
ORN100	ISO100	5.3	107	
ORN160	ISO160	5.3	158	
ORN200	ISO200	5.3	221	
ORN250	ISO250	5.3	253	
ORN320	ISO320	7	330	
ORN400	ISO400	7	405	
ORN500	ISO500	7	507	
ORN630	ISO630	7	659	

Maximum bakeout temperature 100°C.

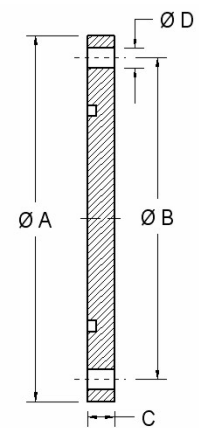
ISO-K BLANK CLAW CLAMP FLANGE

ORDER CODE	ISO	A	B	C	D	Price
BF63	ISO63	95	90	12	70	
BF100	ISO100	130	125	12	102	
BF160	ISO160	180	175	12	153	
BF200	ISO200	240	235	12	213	
BF250	ISO250	290	285	12	261	
BF320	ISO320	370	365	17	318	
BF400	ISO400	450	445	17	400	
BF500	ISO500	550	545	17	501	
BF630	ISO630	690	685	22	651	



ISO-F BOLTED BLANK FLANGE

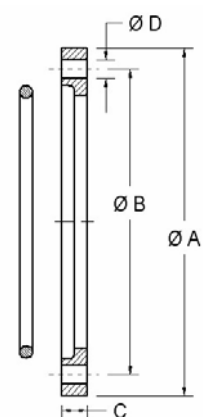
ORDER CODE	ISO	A	B	C	D	Price
BFB63	ISO63	130	110	12	Ø9x4	
BFB100	ISO100	165	145	12	Ø9x8	
BFB160	ISO160	225	200	16	Ø11x8	
BFB200	ISO200	285	260	16	Ø11x12	
BFB250	ISO250	335	310	16	Ø11x12	
BFB320	ISO320	425	395	20	Ø14x12	
BFB400	ISO400	510	480	20	Ø14x16	
BFB500	ISO500	610	580	20	Ø14x16	
BFB630	ISO630	750	720	24	Ø14x20	



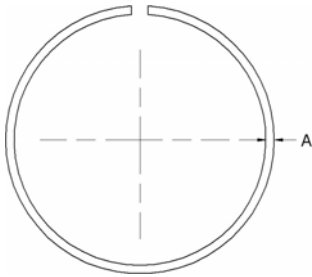
ISO ROTATABLE BOLT-RING. Steel

ORDER CODE	ISO	A	B	C	D	Price
BR63	ISO63	130	110	12	Ø9x4	
BR100	ISO100	165	145	12	Ø9x8	
BR160	ISO160	225	200	16	Ø11x8	
BR200	ISO200	285	260	16	Ø11x12	
BR250	ISO250	335	310	16	Ø11x12	
BR320	ISO320	425	395	20	Ø14x12	
BR400	ISO400	510	480	20	Ø14x16	

Steel rings fit over the standard claw clamp flanges to convert them to rotatable bolted flanges. Retaining ring is included

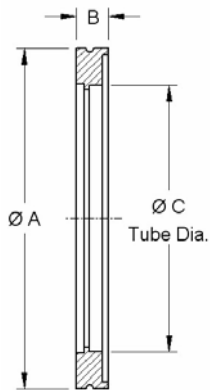


ISO REPLACEMENT RETAINING RING



ORDER CODE	ISO	A	To Fit	Price
RR63	ISO63	3	BR63	
RR100	ISO100	3	BR100	
RR160	ISO160	5	BR160	
RR200	ISO200	5	BR200	
RR250	ISO250	5	BR250	
RR320	ISO320	5	BR320	
RR400	ISO400	8	BR400	

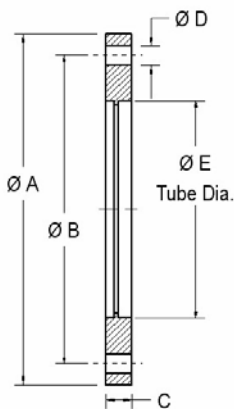
ISO-K BORED CLAW CLAMP FLANGE



ORDER CODE	ISO	A	B	C	Price
BO63	ISO63	95	12	76.2	
BO100	ISO100	130	12	101.6	
BO160	ISO160	180	12	154	
BO200	ISO200	240	12	204	
BO250	ISO250	290	12	254	
BO320	ISO320	370	17	365	
BO400	ISO400	450	17	445	
BO500	ISO500	550	17	545	

Other tube diameters available on request.

ISO-F BORED, BOLTED FLANGE



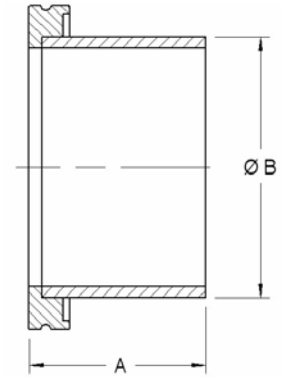
ORDER	ISO	A	B	C	D	E	Price
BOB63	ISO63	130	110	12	Ø9x4	76.2	
BOB100	ISO100	165	145	12	Ø9x8	101.6	
BOB160	ISO160	225	200	16	Ø11x8	154	
BOB200	ISO200	285	260	16	Ø11x12	204	
BOB250	ISO250	335	310	16	Ø11x12	254	

Other tube diameters available on request.

ISO-K CLAW CLAMP TUBULATIONS

ORDER CODE	ISO	A	B	Price
TU63	ISO63	100	76.2	
TU100	ISO100	100	101.6	
TU160	ISO160	100	154	
TU200	ISO200	100	204	
TU250	ISO250	100	254	
TU320	ISO320	100	365	
TU400	ISO400	100	445	
TU500	ISO500	100	545	

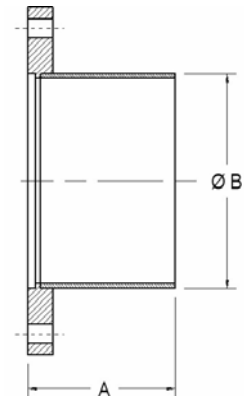
Other tube sizes available on request.



ISO-F BOLTED TUBULATIONS

	ISO	A	B	Price
TUB63	ISO63	100	76.2	
TUB100	ISO100	100	101.6	
TUB160	ISO160	100	154	
TUB200	ISO200	100	204	
TUB250	ISO250	100	254	

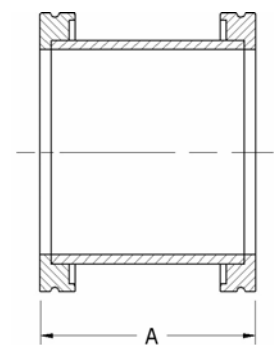
Other tube sizes available on request.



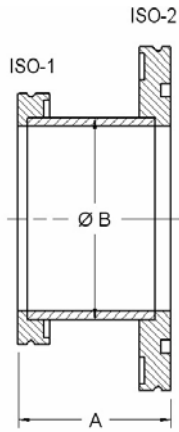
ISO-K STRAIGHT CONNECTOR. (Full Nipple)

ORDER CODE	ISO	A	Price
SC63	ISO63	100	
SC100	ISO100	100	
SC160	ISO160	100	
SC200	ISO200	100	
SC250	ISO250	100	

Other lengths available on request



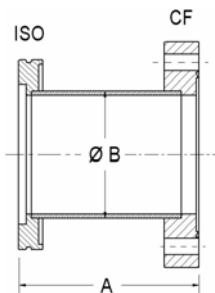
ISO-K REDUCING ADAPTER



ORDER CODE	ISO-1	ISO-2	A	B	Price
RA8063	ISO63	ISO80	50	76.2	
RA10063	ISO63	ISO100	50	76.2	
RA16063	ISO63	ISO160	50	76.2	
RA20063	ISO63	ISO200	90	76.2	
RA10080	ISO80	ISO100	50	76.2	
RA16080	ISO80	ISO160	50	76.2	
RA160100	ISO100	ISO160	50	101.6	
RA200100	ISO100	ISO200	90	101.6	
RA200160	ISO160	ISO200	90	154	
RA250160	ISO160	ISO250	90	154	
RA250200	ISO200	ISO250	90	204	

Other lengths available on request

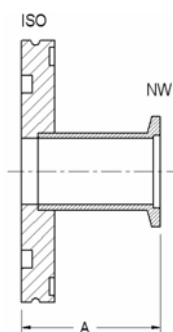
ISO-K TO CF ADAPTER



ORDER CODE	ISO	CF	A	B	Price
AD6363	ISO63	CF63	90	63.5	
AD10063	ISO63	CF100	90	76.2	
AD100100	ISO100	CF100	90	101.6	
AD100160	ISO160	CF100	90	101.6	
AD150100	ISO100	CF150	90	101.6	
AD150160	ISO160	CF150	90	154	

Other lengths available on request

ISO-K TO NW ADAPTER



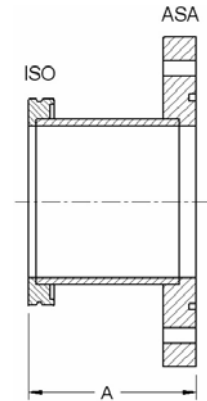
ORDER CODE	ISO	NW	A	Price
AD2563	ISO63	NW25	50	
AD4063	ISO63	NW40	50	
AD4080	ISO80	NW40	118	
AD40100	ISO100	NW40	50	
AD5063	ISO63	NW50	50	
AD5080	ISO80	NW50	118	
AD50100	ISO100	NW50	50	

ISO Fittings

SECTION 2

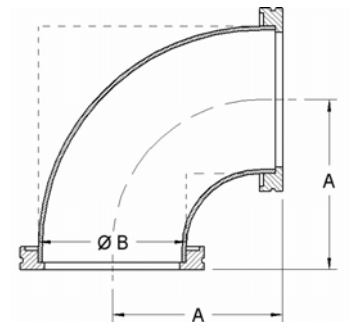
ISO-K TO ASA ADAPTER

ORDER CODE	ISO	ASA	A	Price
RA632	ISO63	2"	106	
RA802	ISO80	2"	106	
RA1002	ISO100	2"	106	
RA633	ISO63	3"	106	
RA803	ISO80	3"	106	
RA1003	ISO100	3"	106	
RA1004	ISO100	4"	106	
RA1604	ISO160	4"	106	
RA1606	ISO160	6"	112	
RA2006	ISO200	6"	112	



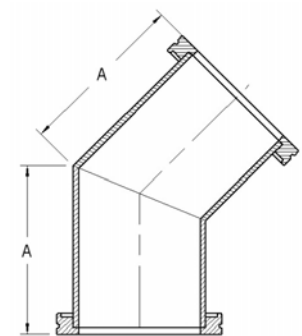
ISO-K ELBOW 90°

ORDER CODE	ISO	A	B	STYLE	Price
ELB63	ISO63	88	76.2	Swept	
ELB100	ISO100	108	101.6	Swept	
ELB160	ISO160	138	154	Swept	
ELB200	ISO200	178	204	Mitre	
ELB250	ISO250	208	254	Mitre	
ELB320	ISO320	T/S	365	Mitre	
ELB400	ISO400	T/S	445	Mitre	
ELB500	ISO500	T/S	545	Mitre	
ELB630	ISO630	500	640	Mitre	

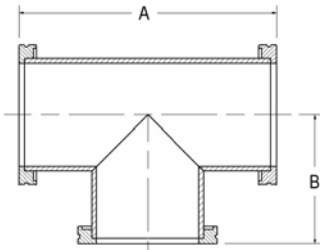


ISO-K ELBOW 45°

ORDER CODE	ISO	A	Price
ELB463	ISO63	82	
ELB4100	ISO100	128	

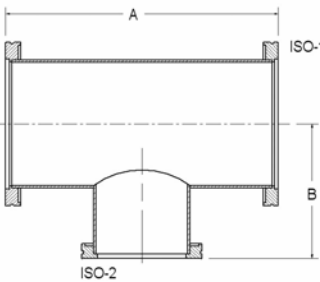


ISO-K T-PIECE



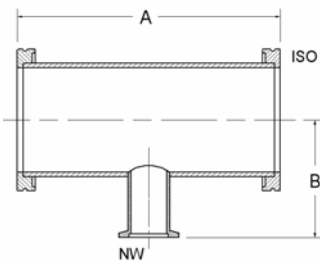
ORDER	ISO	A	B	Price
TEE63	ISO63	176	88	
TEE100	ISO100	216	108	
TEE160	ISO160	276	138	
TEE200	ISO200	356	178	
TEE250	ISO250	416	208	

ISO-K UNEQUAL T-PIECE



ORDER CODE	ISO-1	ISO-2	A	B	Price
TEE10063	ISO100	ISO63	216	107	
TEE16063	ISO160	ISO63	276	130	
TEE160100	ISO160	ISO63	276	131	

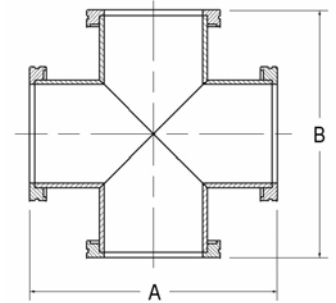
ISO-K TO NW REDUCING T-PIECE



ORDER CODE	ISO	NW	A	B	Price
RTE6316	ISO63	NW16	204	58	
RTE6325	ISO63	NW25	204	79	
RTE6340	ISO63	NW40	204	76	
RTE10025	ISO100	NW25	260	98	
RTE10040	ISO100	NW40	260	95	

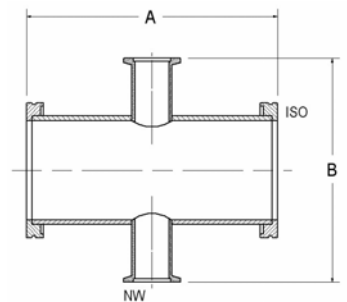
ISO-K 4-WAY CROSS

ORDER CODE	ISO	A	B	Price
X63	ISO63	176	176	
X100	ISO100	216	216	
X160	ISO160	276	276	
X200	ISO200	356	356	
X250	ISO250	416	416	



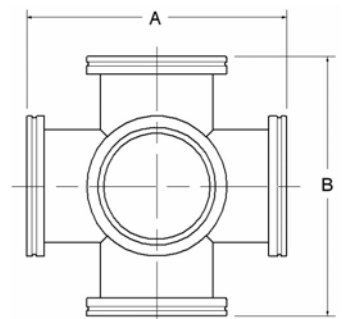
ISO-K TO NW REDUCING CROSS

ORDER CODE	ISO	NW	A	B	Price
RX6316	ISO63	NW16	204	116	
RX6325	ISO63	NW25	204	158	
RX6340	ISO63	NW40	204	152	
RX6350	ISO63	NW50	204	184	
RX10025	ISO100	NW25	260	196	
RX10040	ISO100	NW40	260	190	
RX10050	ISO100	NW50	260	222	
RX16040	ISO160	NW40	320	242	
RX16050	ISO160	NW50	320	272	
RX20040	ISO200	NW40	-	-	

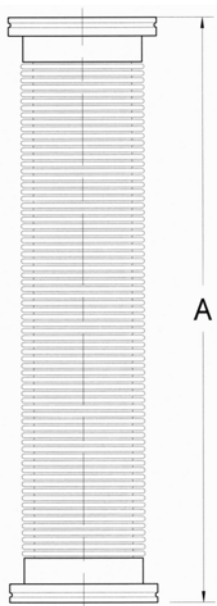


ISO-K 6-WAY CROSS

ORDER CODE	ISO	A	B	Price
XX63	ISO63	176	176	
XX100	ISO100	216	216	
XX160	ISO160	276	276	
XX200	ISO200	356	356	
XX250	ISO250	416	416	



ISO-K FLEXIBLE HOSE. Stainless Steel



ISO 63

ORDER CODE	ISO	Hose ID	A	Price
ISF63-250	ISO63	70	250	
ISF63-500	ISO63	70	500	
ISF63-750	ISO63	70	750	
ISF63-1000	ISO63	70	1000	
ISF63-1500	ISO63	70	1500	
ISF63-2000	ISO63	70	2000	
ISF63-2500	ISO63	70	2500	
ISF63-3000	ISO63	70	3000	

ISO 100

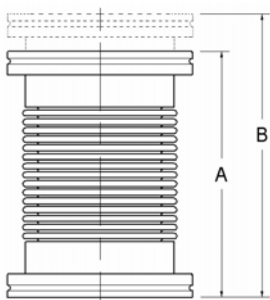
ORDER CODE	ISO	Hose ID	A	Price
ISF100-250	ISO100	100	250	
ISF100-500	ISO100	100	500	
ISF100-750	ISO100	100	750	
ISF100-1000	ISO100	100	1000	
ISF100-1500	ISO100	100	1500	
ISF100-2000	ISO100	100	2000	
ISF100-2500	ISO100	100	2500	
ISF100-3000	ISO100	100	3000	

ISO 160

ORDER CODE	ISO	Hose ID	A	Price
ISF160-250	ISO160	150	250	
ISF160-500	ISO160	150	500	
ISF160-750	ISO160	150	750	
ISF160-1000	ISO160	150	1000	
ISF160-1500	ISO160	150	1500	
ISF160-2000	ISO160	150	2000	
ISF160-2500	ISO160	150	2500	
ISF160-3000	ISO160	150	3000	

Custom lengths for all sizes
Available on request

ISO-K HYDROFORMED BELLOWS



ORDER CODE	ISO	Hose ID	A	B	Price
BEL63	ISO63	70	106	127	
BEL100	ISO100	100	107	127	
BEL160	ISO160	150	170	220	
BEL200	ISO200	-	170	220	
BEL250	ISO250	-	170	220	



advanced vacuum technology



Turbo Molecular Pumps

Turbomolecular Pumps

Kedron offers versatile, high-performance turbomolecular pumps suitable for scientific research, and industrial production environments with pumping speeds from 100 - 3500 litres per second. All pumps have ceramic bearings, giving longer life, lower vibration and increased reliability.

Our pumps are supplied complete with controllers incorporating RS232 communications and protection features, to prevent overheating and damage to the turbo pumps, ensuring the highest degree of reliability.



TMP	110E	1500E	3500E	620E	700E	1200E	1300E	620NE	1200NE
Pump Type	Turbo	Turbo	Turbo	Drag	Drag	Drag	Drag	Drag	Drag
Suitable for Corrosive Gases	No	No	No	No	No	No	No	Yes	Yes
Pumping speed (l/s)	110	1,500	3,500	600	700	1,200	1,300	600	1,200
HV Flange	ISO100 CF100	ISO250	ISO400	ISO160 CF150	ISO160 CF150	ISO200 CF200	ISO200 CF200	ISO160 CF150	ISO200 CF200
Ultimate Pressure	ISO Flange	6×10^{-8}	6×10^{-8}	6×10^{-9}	6×10^{-9}	6×10^{-8}	6×10^{-8}	6×10^{-8}	6×10^{-8}
	CF Flange	6×10^{-9}		6×10^{-10}	6×10^{-10}	6×10^{-9}	6×10^{-9}	6×10^{-9}	6×10^{-9}
Compression Ratio (mbar)	N ₂	1×10^8	1×10^8	1×10^9	1×10^9	1×10^9	1×10^9	1×10^9	1×10^9
	H ₂	5×10^2	5×10^2	6×10^4	6×10^6	6×10^3	6×10^3	6×10^3	6×10^3
Fore Line Flange	NW25	NW50	ISO100	NW40	NW40	NW40	NW40	NW40	NW40
Bearings	Ceramic	Ceramic	Ceramic	Ceramic	Ceramic	Ceramic	Ceramic	Ceramic	Ceramic
Lubrication	Oil	Oil	Oil	Oil	Grease	Oil	Grease	Oil	Oil
Start-Up Time (min)	<2	<5	<20	<6	<4	<6	<6	<5	<6
Rotational Speed (rpm)	42,300	21,000	13,500	36,000	36,000	24,000	24,000	27,000	24,000
Cooling Requirements	Water/Air	Water	Water	Water	Water	Water	Water	Water	Water
Operating Position	Vertical/Horiz	Vertical $\pm 5^\circ$	Vertical $\pm 5^\circ$	Vertical $\pm 5^\circ$	Any	Vertical $\pm 5^\circ$	Any	Vertical $\pm 5^\circ$	Vertical $\pm 5^\circ$
Weight (Kg)	8	60	120	29	19	39	29	29	39





advanced vacuum technology

Rotary Vane Vacuum Pump

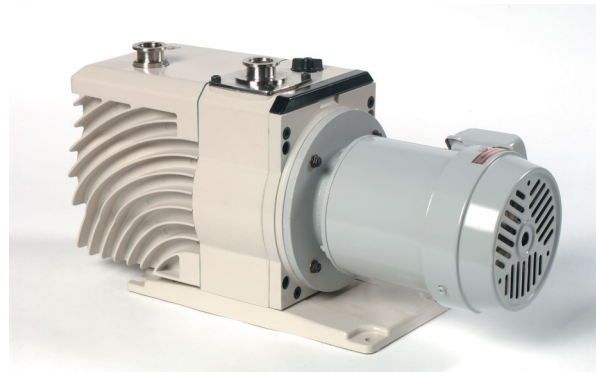
Compact and powerful rotary vane pumps for rough and medium vacuum applications.

RVP Series Rotary Vane Vacuum Pump

The RVP series rotary vane vacuum pumps are all purpose pumps for many areas of industry and research. They can be used as stand alone pumps or as backing pumps integrated into pumping stations. Anti-suck valves are fitted as standard and a gas ballast valve enables water vapour and other process fumes to be pumped off.

Design Features

- Excellent ultimate vacuum
- Improved built-in checkvalve system
- Constant pressure oil circulating system
- Convenient gas ballast valve control
- Enhanced performance and serviceability
- Convenient oil level checking and changing
- Simplified repairs and maintenance



		RVP 2-7	RVP 4-14	RVP6-20	RVP 8-28	RVP 12-43	RVP 18-65	RVP 24-86
Pumping speed m ³ /hr		7	14	20	28	43	65	86
Ultimate Pressure		2 x 10 ⁻³ mbar						
Ultimate pressure (Gas Ballast)		2 x 10 ⁻¹ mbar						
Motor supply Power (KW)	230V 1ph	0.55	0.55	0.75				
	415V 3ph	0.4	0.4	0.75	0.75	1.5	2.2	2.2
Motor speed (rpm)					1450			
Oil capacity (ml)		1300	1100	1400	1800	3800	5500	6500
Inlet port		NW25	NW25	NW25	NW25/40	NW40	NW40	NW40
Weight (Kg)	1ph	27	29	39				
	3ph	23	25	37	39	64	83	88

CE

advanced vacuum technology



 **Kedron**
Engineering

Unit A3 Riverside Industrial Estate
Bridge Road, Littlehampton
West Sussex, BN17 5DF
Tel: +44 (0) 1903 719000
Fax: +44 (0) 1903 719007
Email: sales@kedron.co.uk

www.kedron.co.uk

